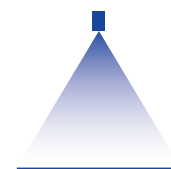


Low pressure flat fan nozzles

Belt lubrication

Series 652



Features:

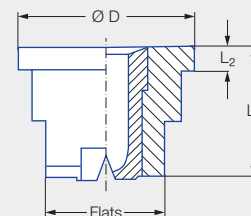
- Particularly low flow rate
- Parabolic liquid distribution
- Assembly with retaining nut

Applications:

- Belt lubrication
- Spraying on food products
- Moistening of rollers
- Oiling of metal sheets



Series 652.xxx.56.03

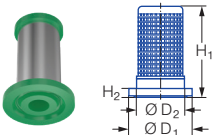




Code	Material	Dimensions [mm]				Weight [g]
		L ₁	L ₂	Ø D	Flats	
Assembly with retaining nut 3/8 BSPP	Stainless steel 303	11.0	2.0	14.8	10	10.0
	POM/Stainless steel	12.0	2.0	14.8	8	3.0
	POM	11.0	2.0	15.0	8	2.0

Spray angle	Ordering no.				Color	Narrowest free cross section Ø [mm]	V̇ water [l/min]			
	Type	Mat. no.					p [bar]			
		16	8H.03	56.03			1.0	2.0	3.0	5.0
75°	652.145	●	●	●	Green	0.12	0.04*	0.05	0.06	0.08
	652.165	●	●		Black	0.14	0.05*	0.07	0.08	0.10
	652.185	●	●	●	Red	0.16	0.06*	0.08	0.10	0.13
	652.215	●	●	●	Blue	0.20	0.08*	0.11	0.14	0.18
	652.245	●	●	●	Orange	0.30	0.12*	0.16	0.20	0.26
	652.275	●	●		Brown	0.30	0.16*	0.22	0.27	0.35
120°	652.187	●	●		Grey	0.20	0.06*	0.08	0.10	0.13
	652.247	●	●		Black	0.20	0.12*	0.16	0.20	0.26
	652.277	●	●		Black	0.30	0.16*	0.22	0.27	0.35

* Differing spray pattern.

Accessories:

Designation	Ordering no.	Material	Color	Pressure [bar]		G BSPP	Dimensions [mm]						Mesh size [mm]
				Opening	Closing		H ₁	H ₂	Ø D	Ø D ₁	Ø D ₂	Hex	
 Filter with non-return valve	095.016.53.11.00	PP	Blue	0.50	0.30	-	21.00	1.60	-	15.00	11.00	-	0.08
	095.016.53.14.63	PP	Green	2.80	1.60	-	21.00	1.50	-	15.00	11.00	-	0.08
 Flat gasket	065.240.55	PTFE	-	-	-	-	-	-	-	-	-	-	-
	065.240.72	EWP 210	-	-	-	-	-	-	-	-	-	-	-
 Retaining nut	065.200.16	Stainless steel 303	-	-	-	3/8	13.00	10.00	12.80	-	-	22	-
	065.200.56	POM	Black	-	-	3/8	14.50	11.50	13.00	-	-	22	-

Conversion formula for this series: $\dot{V}_2 = \dot{V}_1 \cdot \sqrt{\frac{p_2}{p_1}}$

Ordering Type + Material no. = Ordering no.
example: 652.145 + 16 = 652.145.16

Assembly accessories can be found in Chapter 9 "Accessories".